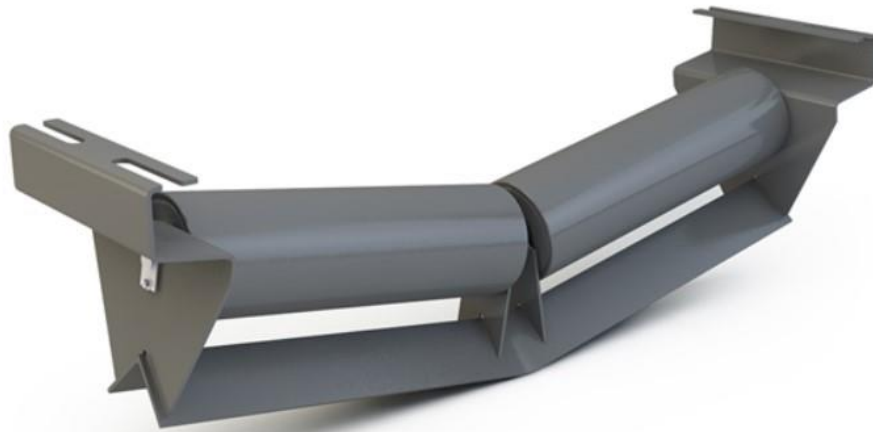


V-RETURN IDLER



V-Return Idlers are available with 4.5" and 7" drop heights and are built with a 10° two roll trough configuration that allows gravity to naturally keep the belt centered. The shorter two roll design enables the user to implement much lighter rolls than the traditional single roll configurations.

FEATURES AND BENEFITS

- CEMA C, D, and E in 4.5" and 7" drop heights
- CEMA F in 7" drop heights
- 10° trough angle allows gravity to naturally track the belt
- Available in CEMA C, D, E, and F series
- Available with rubber disc rolls
- Two rolls to aid in replacement by reducing weight



www.infinitybelting.com

Product shown are for illustrative purposes only and may display optional accessories or components. Please contact Infinity Belting Ltd for more information on product specifications. Please note that changes in engineering, design and specifications; add improvements; or discontinue manufacturing at any time without notice can occur however Infinity Belting Ltd will endeavour to offer a similar or superior option whenever possible.